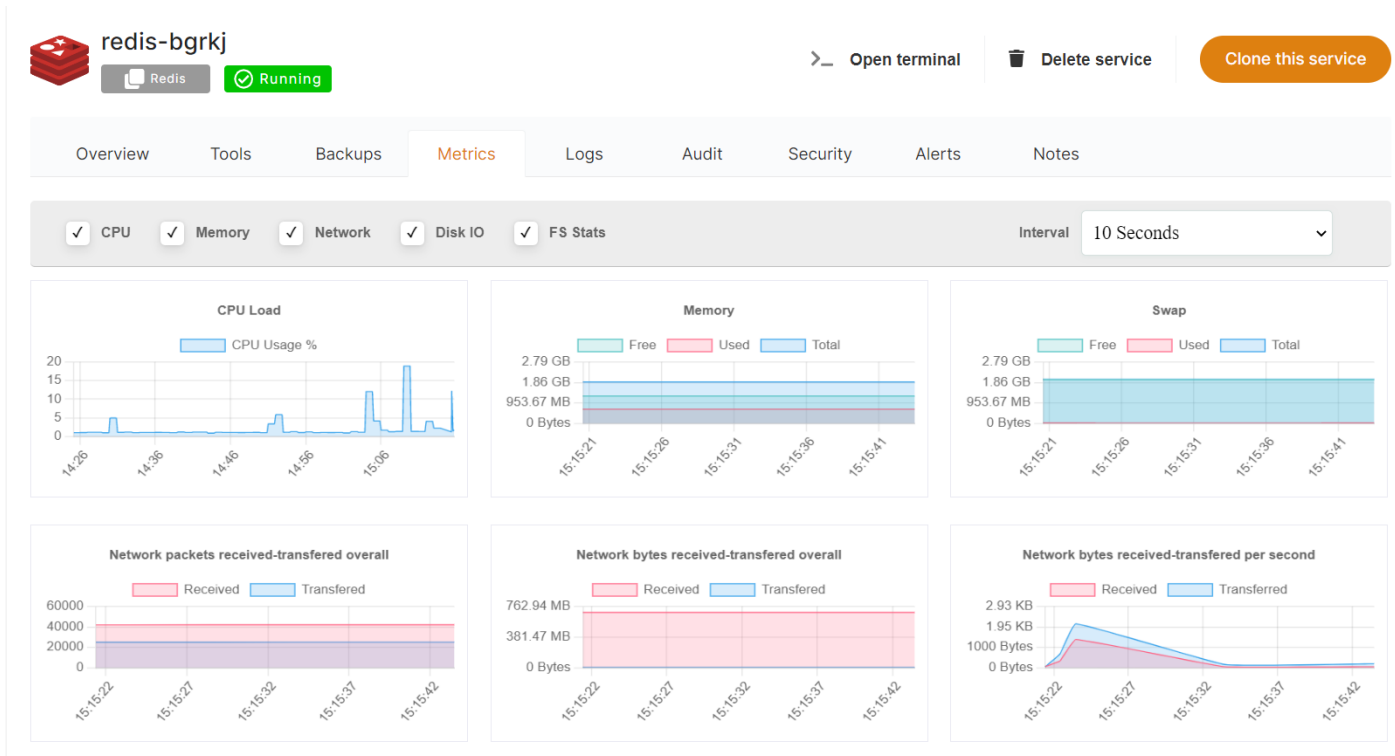


Metrics

Metrics tabs allow you to view your service's metrics in real-time.

You can configure the update period to as low as a 1-second interval.



Enabling additional metrics in real-time will use additional CPU while you are viewing the Dashboard. To limit CPU usage, increase the update period interval or select fewer metrics.

Revision #5

Created 9 January 2022 13:22:16 by Joseph Benguira

Updated 29 September 2022 09:47:00 by Amit